



Stoneacre
Properties



Fieldhouse Close

Leeds, LS17 6HR

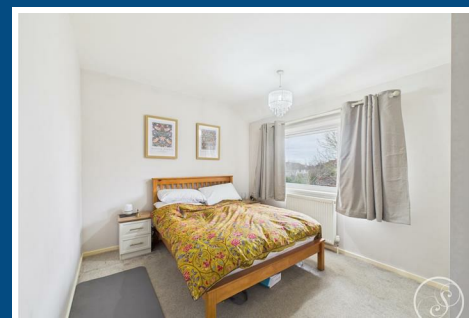
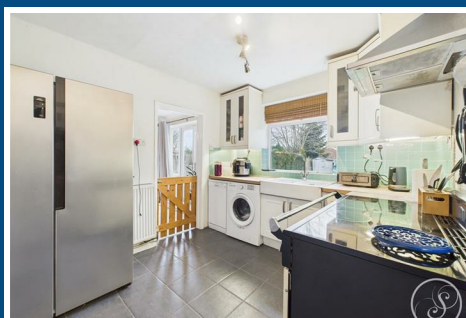
£265,000



Fieldhouse Close

Leeds, LS17 6HR

£265,000



ENTRANCE HALL

Radiator, stairs, tiled flooring.

LOUNGE-DINER

Open plan space ideal for entertaining. Feature inset gas fire, double glazed patio doors to rear garden, double glazed window to front aspect, radiator, wood strip laminate flooring.

KITCHEN

Featuring a range of modern wall and base units with belfast style double sink and solid wood worktops, freestanding range style cooker, space for freestanding American style fridge freezer, space and plumbing for washing machine and slimline dishwasher, UVPC door to side, double glazed window, radiator, two large store cupboards.

FIRST FLOOR LANDING

Double glazed window, loft hatch, store cupboard.

BEDROOM ONE

Double bedroom with double glazed window, radiator.

BEDROOM TWO

Second double bedroom with double glazed window, radiator.

BEDROOM THREE

Third bedroom with double glazed window, radiator, built in store cupboard.

BATHROOM

Modern suite comprising P shaped bath with shower and screen, wash hand basin, WC, bespoke mosaic tiled flooring, chrome heated towel rail, dual aspect frosted double glazed windows, extractor fan.

EXTERNAL

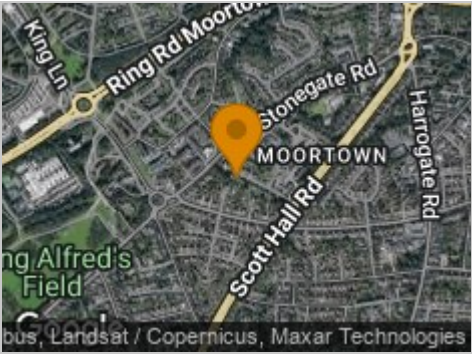
The property benefits from a lawned front garden and generous rear garden mainly laid to lawn with decking area, patio area and external store. There is ample un-allocated on street parking available.



Road Map



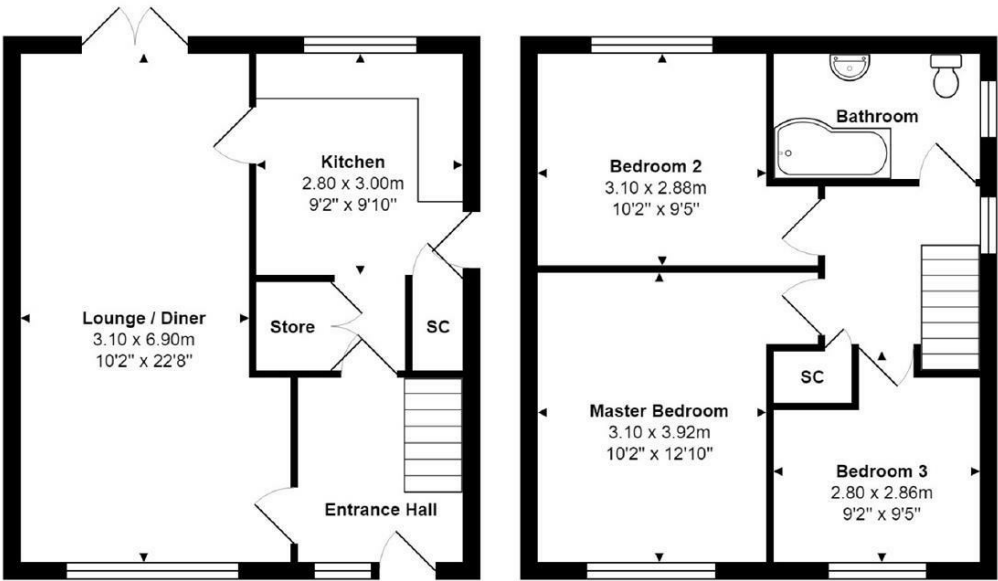
Hybrid Map



Terrain Map



Floor Plan



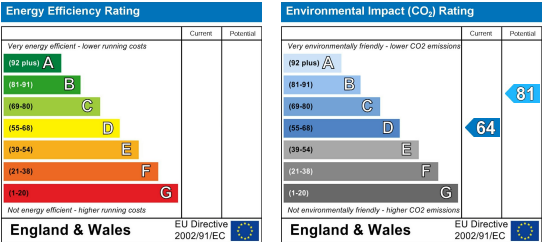
Total Area: 82.8 m² ... 891 ft²

All measurements are approximate and for display purposes only

Viewing

Please contact our Chapel Allerton Sales Office on 0113 237 0999 if you wish to arrange a viewing appointment for this property or require further information.

Energy Efficiency Graph



These particulars, whilst believed to be accurate are set out as a general outline only for guidance and do not constitute any part of an offer or contract. Intending purchasers should not rely on them as statements of representation of fact, but must satisfy themselves by inspection or otherwise as to their accuracy. No person in this firm's employment has the authority to make or give any representation or warranty in respect of the property.